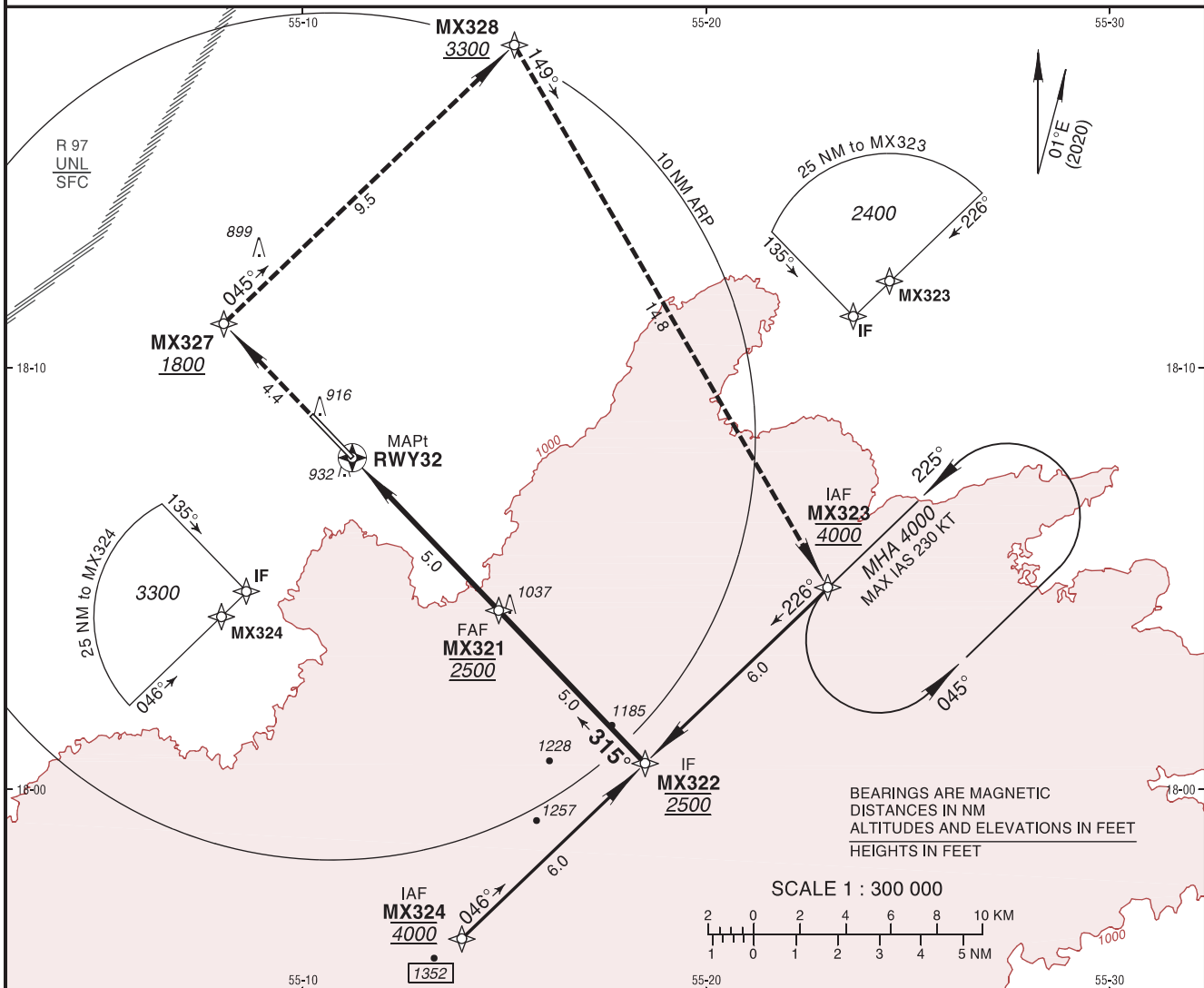


INSTRUMENT APPROACH CHART - ICAO

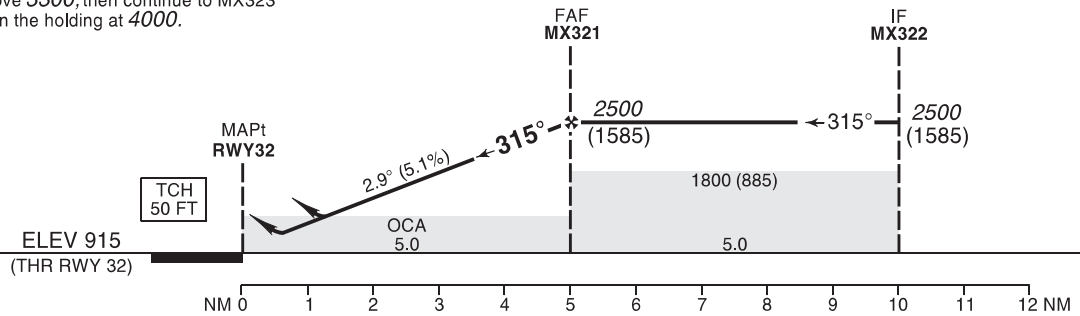
INSTRUMENT APPROACH CHART - ICAO **AD ELEV 915 FT** **MARMUL/Marmul OMAN**
 HEIGHTS RELATED TO THR RWY 32 ELEV 915 FT Marmul Information 122.750 **RNP RWY 32**



MISSED APPROACH:

Climb direct to MX327 at or above 1800, turn RIGHT to MX328 at or above 3300, then continue to MX323 on track 149° to join the holding at 4000.

TA 13000



STRAIGHT-IN APPROACH		A	B	C	D	ADVISORY INFORMATION ONLY							
LNAV/VNAV	OCH	261			Not Authorized	NM to RWY32	2	3	4	5			
	DA(H)	1180 (270)				ALT (HGT)	1576 (661)	1884 (969)	2192 (1277)	2500 (1585)			
LNAV	OCH	365			Not Authorized								
	MDA(H)	1280 (370)											
CIRCLING (HAA)*		A	B	C	D	GS	kt	80	100	120	140	160	180
	OCH	415	495	635	Not Authorized	FAF-MAPt	min:s						
	MDA(H)	1330(420)	1410(500)	1550(640)		ROD: 5.1%	ft/min	420	520	630	730	840	950

① Timing not authorized for defining the MAPt.
 RNP Approach required.
 BARO VNAV Not authorized below 5°C or above 50°C.

Holding Instruction/Areas RNP RWY 32

Path descriptor	Fix identifier	Inbound course M (T)	Leg Distance	Turn direction	Minimum altitude	Maximum altitude	Speed	Magnetic variation	Navigation performance
Hold	MX323	225° (225.8°)	1 MIN	L	4000		230 KT	1°E	

Route Description: RNP RWY 32

Path descriptor	Fix identifier	Flyover	Course Magnetic (True)	Turn direction	Altitude	Speed limit	Magnetic variation	Distance	Navigation performance
IF	MX323				@4000		1°E		RNP APCH
TF	MX322		226° (226.3°)		@2500		1°E	6.0	RNP APCH
TF	MX321		315° (316.2°)	R	@2500		1°E	5.0	RNP APCH
TF	<u>RWY32</u>	Y	315° (316.2°)		+965		1°E	5.0	RNP APCH

Path descriptor	Fix identifier	Flyover	Course Magnetic (True)	Turn direction	Altitude	Speed limit	Magnetic variation	Distance	Navigation performance
IF	MX324				@4000		1°E		RNP APCH
TF	MX322		046° (046.3°)		@2500		1°E	6.0	RNP APCH
TF	MX321		315° (316.2°)	L	@2500		1°E	5.0	RNP APCH
TF	<u>RWY32</u>	Y	315° (316.2°)		+965		1°E	5.0	RNP APCH

Path descriptor	Fix identifier	Flyover	Course Magnetic (True)	Turn direction	Altitude	Speed limit	Magnetic variation	Distance	Navigation performance
MISSED APPROACH									
DF	MX327				+1800		1°E	4.4	RNP APCH
TF	MX328		045° (046.2°)	R	+3300		1°E	9.5	RNP APCH
TF	<u>MX323</u>	Y	149° (150.0°)	R	@4000		1°E	14.8	RNP APCH
HM	<u>MX323</u>	Y	225° (225.8°)	L	+4000		1°E		RNP APCH

Aeronautical Data Tabulation: RNP RWY 32

Waypoint / Fix	Latitude	Longitude	Latitude (MIN)	Longitude (MIN)	Notes
MX323 (IAF)	N18°04'46.99"	E055°23'02.05"	N18°04.783'	E055°23.034'	
MX324 (IAF)	N17°56'27.10"	E055°13'56.33"	N17°56.452'	E055°13.939'	
MX322 (IF)	N18°00'37.10"	E055°18'29.08"	N18°00.618'	E055°18.485'	
MX321 (FAF)	N18°04'14.62"	E055°14'51.31"	N18°04.244'	E055°14.855'	
RWY32 (MAPT)	N18°07'52.07"	E055°11'13.39"	N18°07.868'	E055°11.223'	
MX327	N18°11'02.62"	E055°08'02.25"	N18°11.044'	E055°08.038'	
MX328	N18°17'38.62"	E055°15'14.58"	N18°17.644'	E055°15.243'	